



*List Price: \$485,000*  
*Condo Fee: \$377.29*  
*Taxes: \$3834 (2013)*  
*Living Area: 835 sq. ft.*

**Excellent location . . . .**

Literally above the red line Metro (best of all -- avoid rain and snow by accessing the metro via the condo garage)

Only steps to Whole Foods, Starbucks, restaurants, new Aquatic Center, and entertainment  
 Minutes to Bethesda and Georgetown

**State-of-the-art luxury building . . . .**

24-hour front desk and concierge

Fitness room with cardio, free weights, and more

Resident lounge (offers wireless Internet)

Private courtyard and terrace

**High-end finishes . . . .**

Hardwood Floors

Granite Counters

Solar Shades

ELFA Custom Shelving

**And more . . . .**

Open, airy living space with 9-foot ceilings (super-tall ceiling height exclusive to 6th floor)

One of only three units at Cityline offering a true entry foyer as well as a bedroom ideally located down the hall and around the corner from the living room

Lots of natural light through floor-to-ceiling windows

Master bedroom with wall of closets

Open floor plan kitchen boasts plenty of room for dicing and slicing as well as ample storage space; appliances include dishwasher, refrigerator, range/oven, and microwave

Designer bathroom with Carrera marble-topped vanity

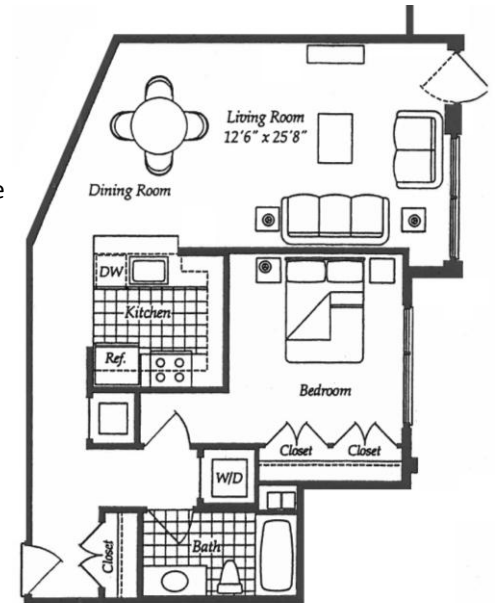
Washer and dryer in-unit

Pre-wired throughout for cable, FIOS, and satellite TV

Central air-conditioning

Pets allowed

Covered, reserved parking space included in list price



*Information deemed reliable but not guaranteed.*



[www.rochellerubin.com](http://www.rochellerubin.com)

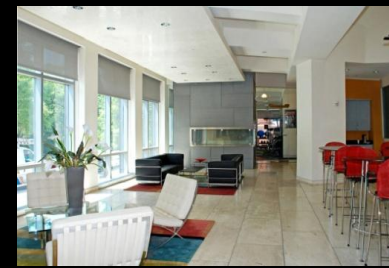
**202-316-5591**



4833 Bethesda Ave. Ste 200  
 Bethesda, Maryland 20814  
 301-654-3200 301-656-6182



Licensed in D.C. and Maryland



# CITYLINE AT TENLEY

## 4101 Albemarle St NW #652

*Never before available top-floor -- stunning and spacious (over 800 sq. ft.) -- one bedroom condominium home flooded with natural light and boasting super-tall ceilings, wall of windows, and ideal floor plan . . . .*