



### Excellent location . . .

Literally above the red line Metro (best of all -- avoid rain and snow by accessing the metro via the condo garage)

Steps to Whole Foods, Starbucks, new Tenley Library, restaurants, and entertainment

One block from new Aquatic Center and Wilson Track plus summer concerts at Fort Reno

Minutes to Bethesda, Georgetown, and Dupont Circle

### State-of-the-art luxury building . . .

24-hour front desk and concierge

Fitness room featuring cardio (with TVs), free weights, and nautilus

Resident lounge (includes free wireless Internet)

Two courtyards

### High-end finishes . . .

Hardwood Floors

Granite Counters

ELFA Custom Shelving

*List Price: \$659,101*

*Condo Fee: \$517.95*

*Taxes: \$5,378 (2011)*

### And more . . .

Bright, airy living space with 9 foot ceilings

Lots of natural light through floor to ceiling windows in living room and multiple exposures in second bedroom

Blue sky and tree-top views from highest vantage point in Cityline and from highest elevation in D.C.

Master bedroom with two double closets

Designer bathrooms include Carrera marble-topped vanities

Updated kitchen with granite counters

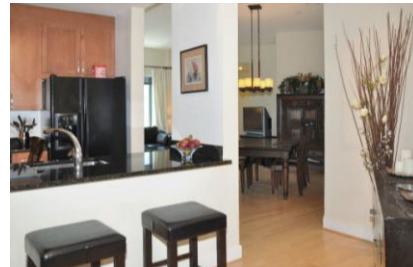
Spacious second bedroom large enough to accommodate a guest room AND home office, media room, artist's studio. Think big!

Full-size washer and dryer

Loads of closet space (two double closets in master, huge double-wide closet in 2nd BR, plus large linen/laundry closet)

Pets allowed

Covered parking space included in list price



Information deemed reliable but not guaranteed.



**RR**  
ROCHELLE RUBIN

[www.rochellerubin.com](http://www.rochellerubin.com)  
202-316-5591

**Stuart & Maury, Inc.**  
Realtors

4833 Bethesda Ave. Ste 200  
Bethesda, Maryland 20814  
301-654-3200 301-656-6182



Licensed in D.C. and Maryland





CITYLINE AT TENLEY

# 4101 Albemarle St NW #620

*Spacious (over 1,250 sq. ft.) two bedroom, two full bath top-floor condominium home flooded with natural light and boasting super-tall 9-foot ceilings . . . .*