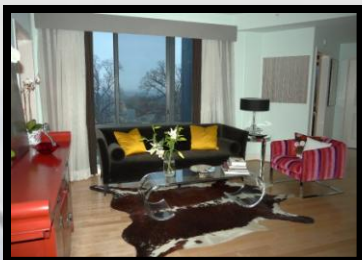


CITYLINE AT TENLEY Wisconsin & Albemarle, NW
4101 Albemarle St NW #520

Stunning and spacious two bedroom two full bath condominium home with over \$40,000 of custom finishes and an unbeatable location . . .



Do not miss this rare opportunity to call home this stunning and spacious two bedroom two full bath condo with over \$40,000 of custom finishes and an unbeatable location right above the Tenleytown / AU metro, reserved garage parking, 24-hour concierge and so much more.

City Living at a New Level

Excellent location

Literally above the red line Metro
 Only steps to Whole Foods, Starbucks, restaurants, and entertainment
 Minutes to Bethesda and Georgetown

New state-of-the-art luxury building

24-hour Concierge
 Fitness Room
 Resident Lounge (Wireless Internet and Plasma TV)
 Private Courtyard

High-end finishes

Hardwood Floors
 Cherry Cabinets
 Granite Counters
 Stainless Steel Appliances
 Marble and Glass Custom Shower
 ELFA Custom Shelving in Closets

List Price: \$689,000
Condo Fee: \$486
Taxes: \$5,750 (2007)

And more

LCD TV in kitchen (mounted/hooked up)
 Expansive windows in LR and BRs
 Huge designer guest bathroom with large shower (including two shower heads), beautiful custom vanity and Lacava sink.
 Master bedroom with two double closets
 Kitchen w/ open floor plan and new stainless steel dishwasher, refrigerator (including smart-filter water & ice dispenser), range/oven, and microwave
 In-wall speakers with separately controlled volume in livingroom, master bedroom, and master bath.
 Pre-wired throughout for cable and satellite TV
 New full-size washer and dryer
 Pet-friendly building
 Covered, reserved parking space

